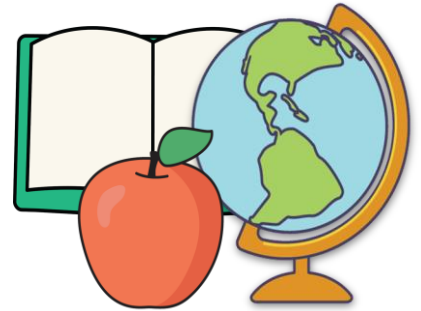


NEWSLETTER

2A Term 2 2025



Upcoming EVENTS

P&C Mother's Day gift stall: 7th May

P&C Mother's Day breakfast
9th May, 7am – 9am

Deadly Choices Program:
Friday P-2 (Weeks 2 – 9)

Camp Quality performance: 19th June

Life education with Healthy Harold
Week 10

A Message from Ms Rodgers

I hope you all had a wonderful Easter break! I am very excited to be back with my gorgeous class once again. I know that we are all ready to begin exploring our new topics in class and continue to build on the wonderful progress that was made over the first 10 weeks of the school year. This newsletter provides you with a quick snapshot of the topics we will be covering in class this term. I hope you find it informative.

WHAT WE'RE Learning

MATHS:

Students will tell time to the quarter hour and use a calendar to locate information. They will count and represent numbers up to 1 000, locate numbers on a number line and partition numbers using place value. Students will also add and subtract numbers.

ENGLISH:

Students will become 'Animal Experts' by engaging with simple informative texts. They will explore how a similar topic is presented in an imaginative text. Students will create a multimodal poster that provides facts about an animal.

MEDIA ARTS:

Students create representations of animals and habitats to deliver an environmental message using media art forms.

SCIENCE:

Students describe and represent the changes to a living thing in its life stages. They compare the life stages of two different living things

HASS:

This Semester, students will continue their inquiry to answer the question: **How and why** have changes in road transport affected the lives of people over time?

Specialist SCHEDULE

Tuesday:

P.E.
Music

Wednesday:

Health
Japanese

Thursday:

Digital Technology
Return Homework

Friday:

Music
Library Borrowing
Homework sent home



krodg4@eq.edu.au

CONTACT INFO



(07) 5585 7666